

ASSEMBLY INSTRUCTIONS

METAL MESH OTTOMAN



Important before Assembly

Read these instructions carefully before assembling or using the product.

Please check the contents of the boxes before attempting to assemble this product. The instructions will have a checklist of parts and fittings.

It would be sensible to lay a rug or a carpet on the floor where you intend to assemble the product, to void scratches and damaging the product or the floor.

Assemble the product as close to its intended final location/ room as possible.

Do NOT use any power tools as this may damage the frame.

Health & Safety:

This product or some parts of this product will be heavy. Please use an assistant when lifting.

DO NOT jump on the product or any of its parts.

DO NOT use this product if any parts are missing, damaged or worn.

DO NOT use this product unless all fixings are secured.

Please keep small parts out of reach of children.

Always use on a level, even surface.

Please keep these instructions for future reference.

Box 2 (Small Box)

Parts List

Qty	Description
1	Left & Right Hinge Set 
2	Pistons 
1	Red Safety Lock 
12	M8*20mm Bolts H22 <small>* (4 for Support Bar, 8 for 2xHinges) +4 bolts with super king for the additional support bar.</small> 
3	M8*15mm Bolts 
1	M8*25mm Long Bolt 

Tools Required

You will need an Adjustable Spanner
and a Screwdriver
(Not provided)



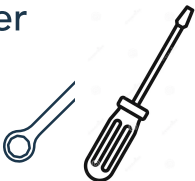
Box 1 (Large Box)

Parts List

Qty	Description
1	Metal Mesh Frame 
1-2	Metal Support Bar <small>* 2x Support Bars with Superking Size</small> 
4	M6 Bolts, Nuts & Washers 
4	Foam Pads for Support Bar 

Tools Required

You will need an Adjustable Spanner
and a Screwdriver
(Not provided)



Step 1:

STEP 1: SIDE RAILS PREPARATION



If your hinges are pre-fitted, skip to step 5.

Step 2:



Place the hinges on the siderails. The hinges should mirror each other as shown above.

Step 3:

Keep the 4 bolts loose until all the bolts fit into the holes, only then tighten them.



M8 bolts x 20mm

Step 4:

Use the M8x20mm bolts to secure the hinge to the siderail.



You must lift the hinge in order to insert the last screw.

Step 5:



Use an M8x25mm long bolt to secure the components in the order shown above.

Step 6:



Secure the siderail to the headboard using the pre-fitted fixings and tighten the nuts.

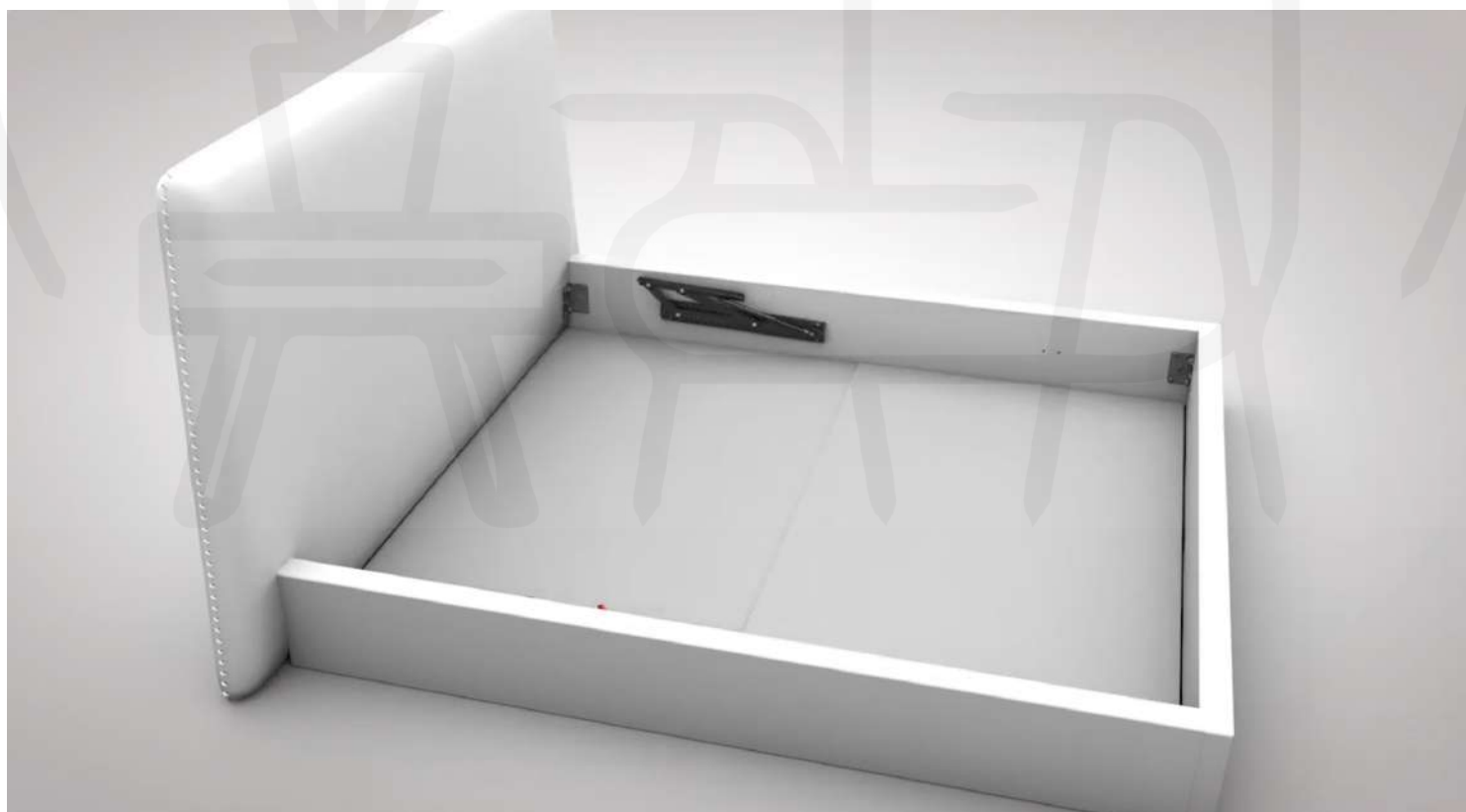
Step 7:

STEP 3:



Attach the footboard to the siderails using the pre-fitted hook fixings, then tighten the nuts.

Step 8:

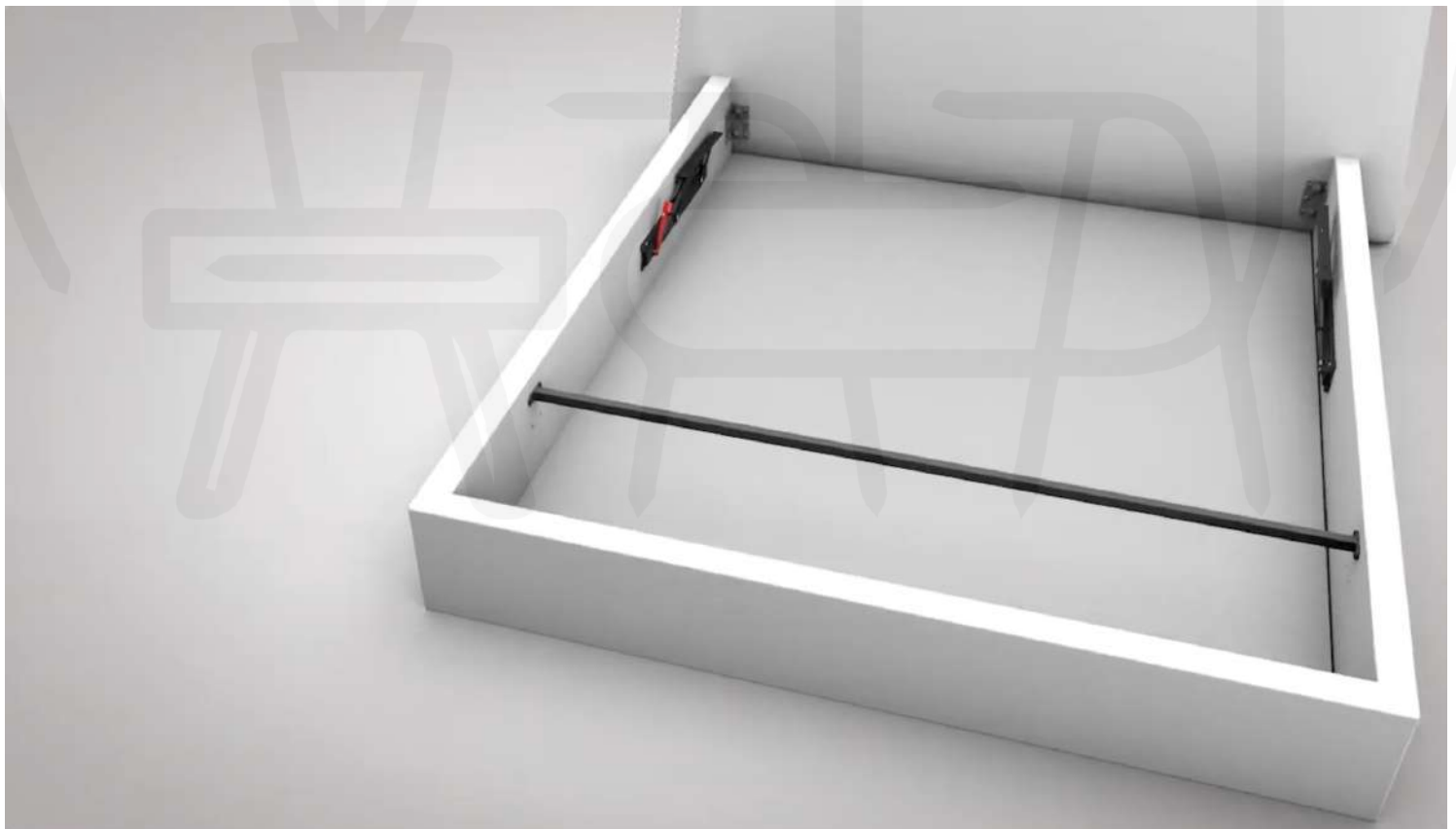


If you ordered baseboards, insert them now.

Step 9:

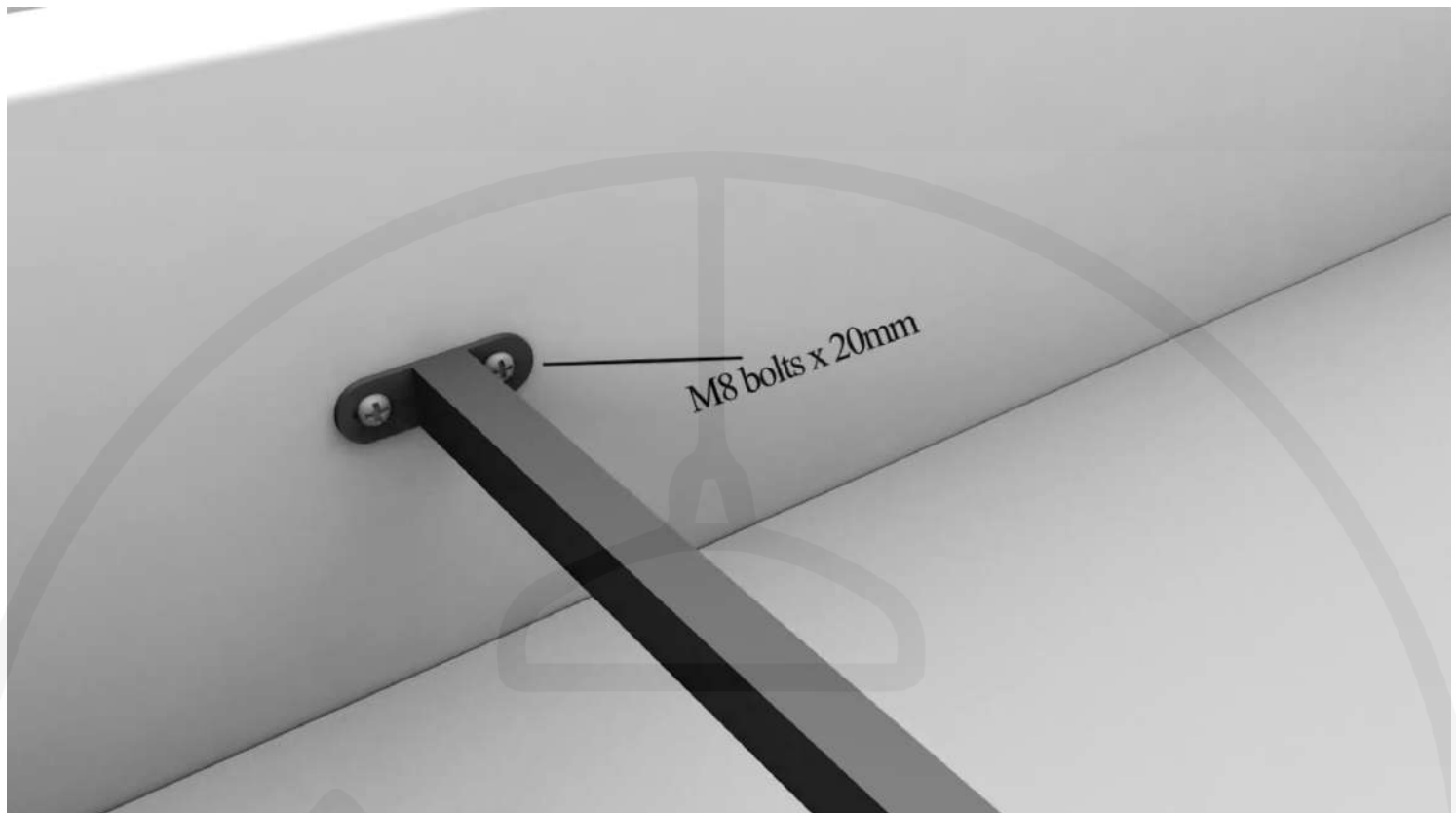


Step 10:



Place the support bar(s) inside the bed.

Step 11:



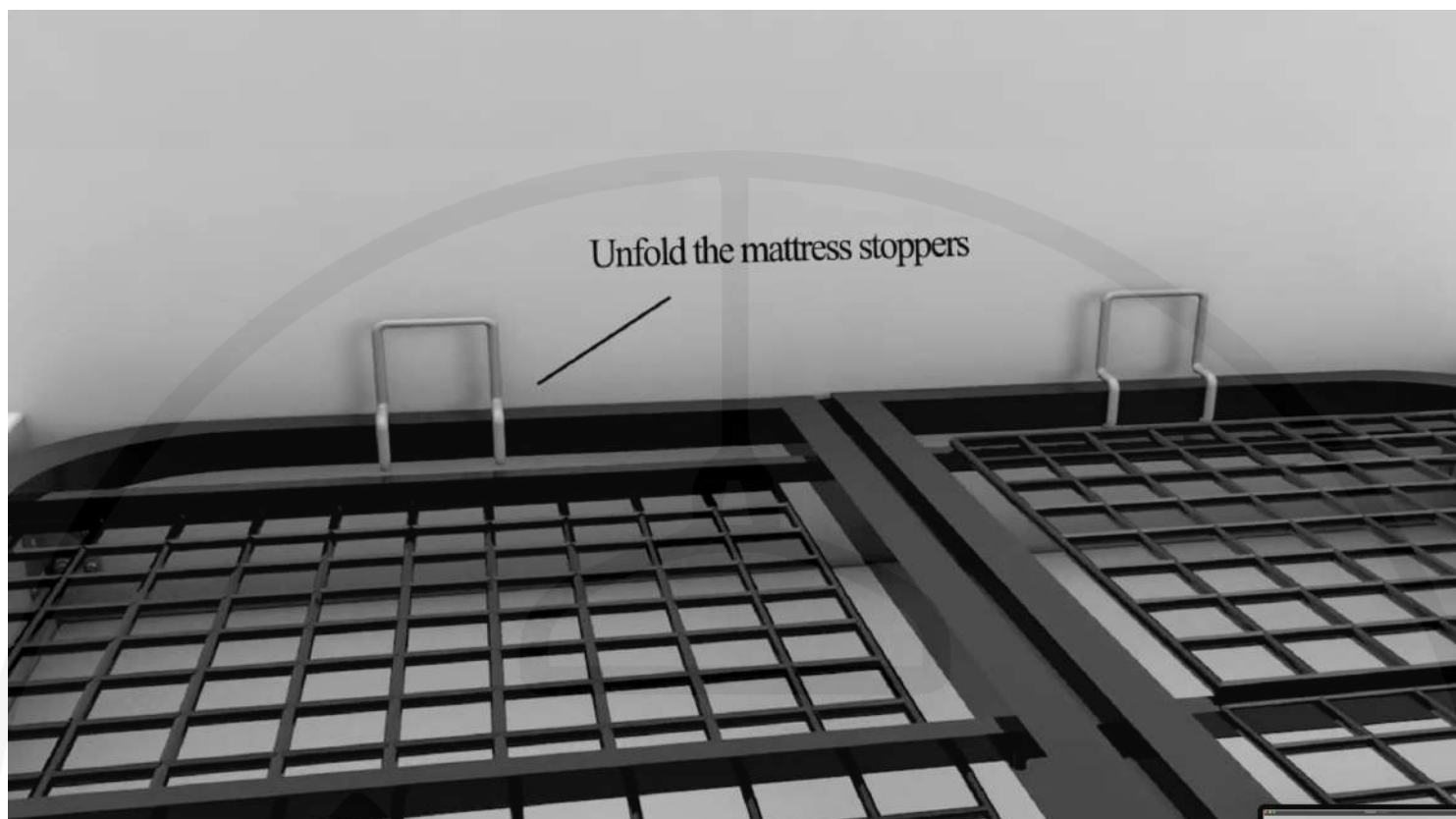
Secure the support bar using two M8x20mm bolts. Repeat this step on the other side of the bed.

Step 12:



Place the metal mesh frame onto the bed.

Step 13:

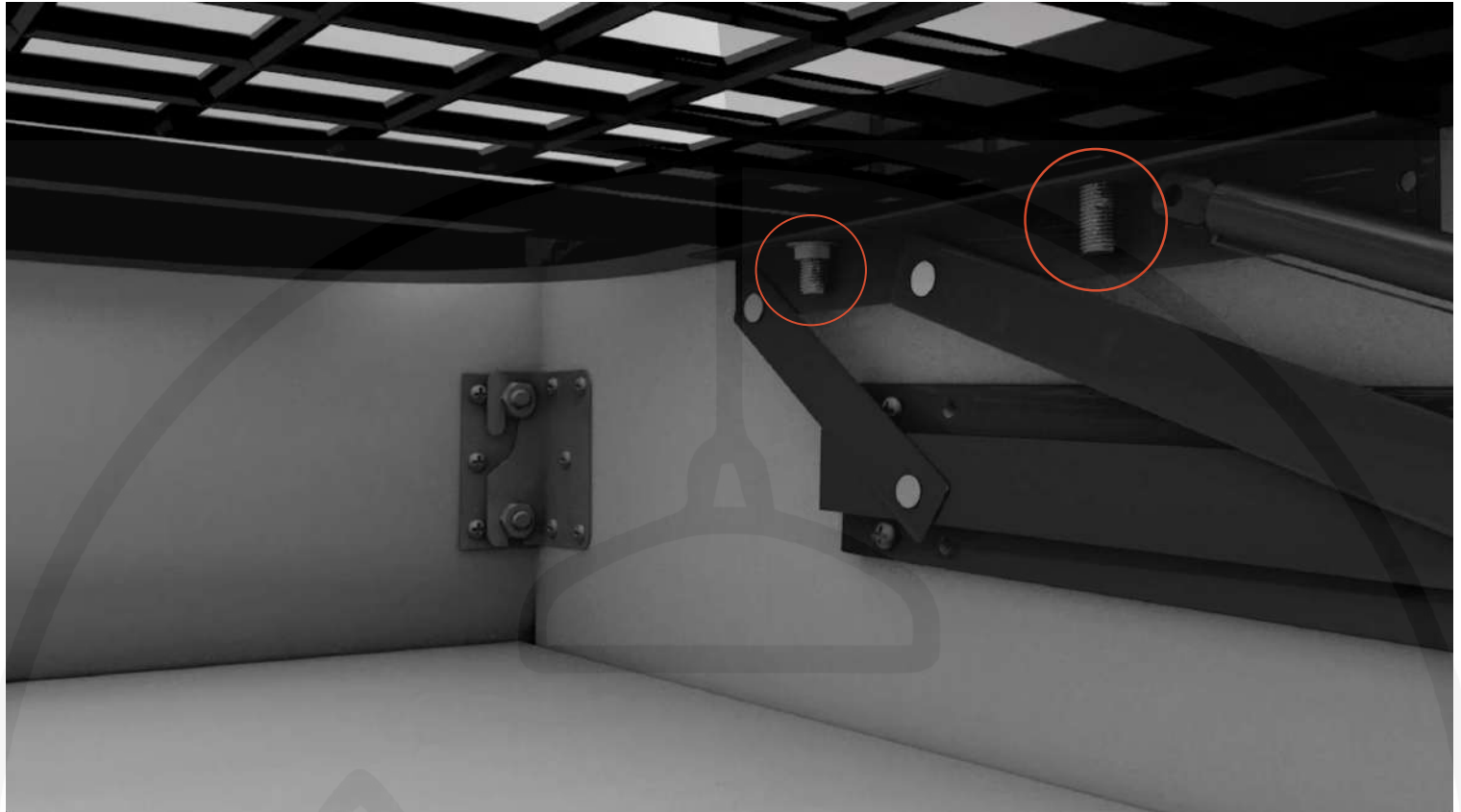


Step 14:



Use the M6 bolts to secure the base to the left and right hinges.

Step 15:



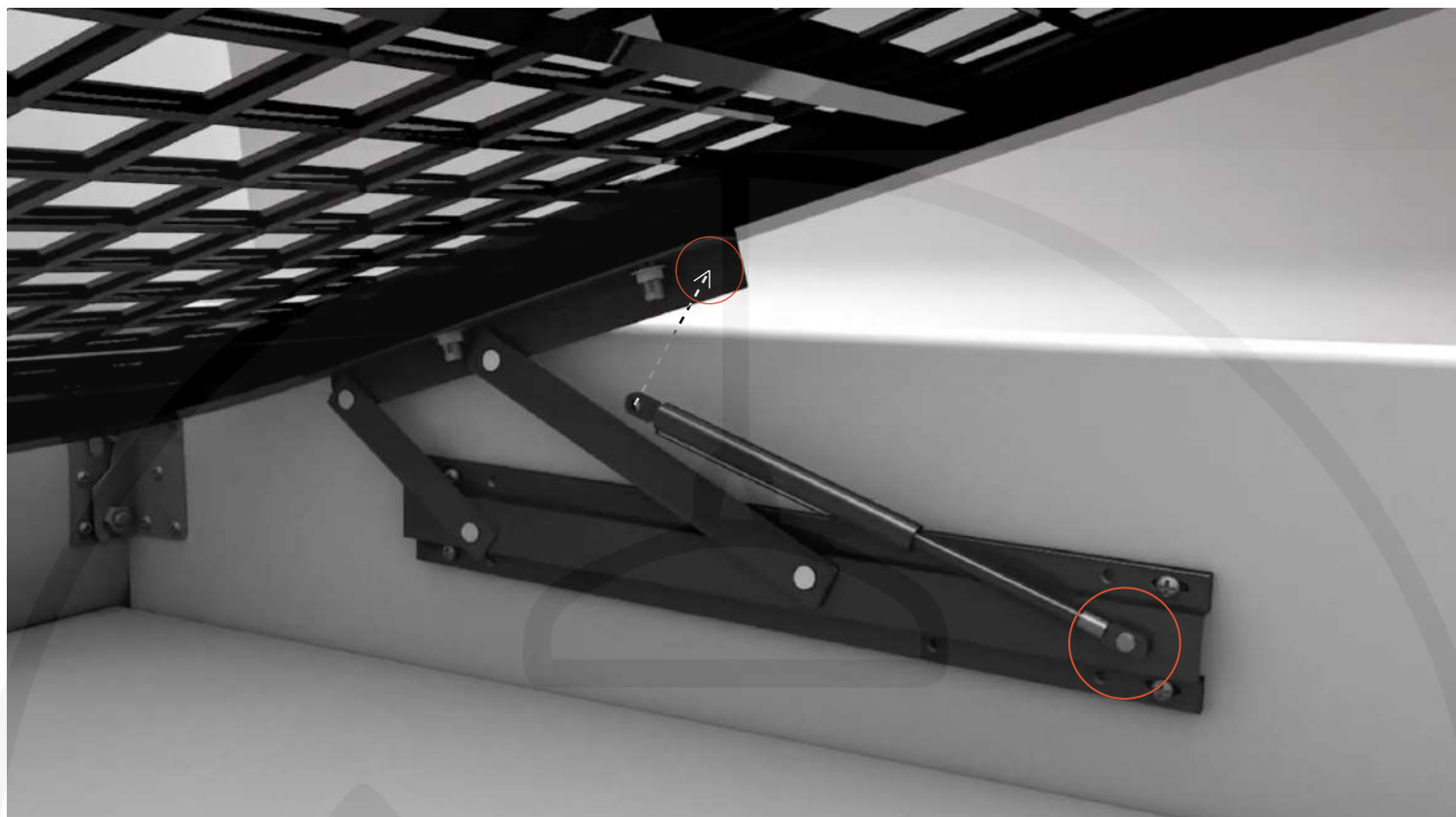
Tighten the two nuts on both sides.

Step 16:



Use an M8x15mm bolt to secure the piston to the metal mesh bed frame.
Repeat this step on the opposite hinge.

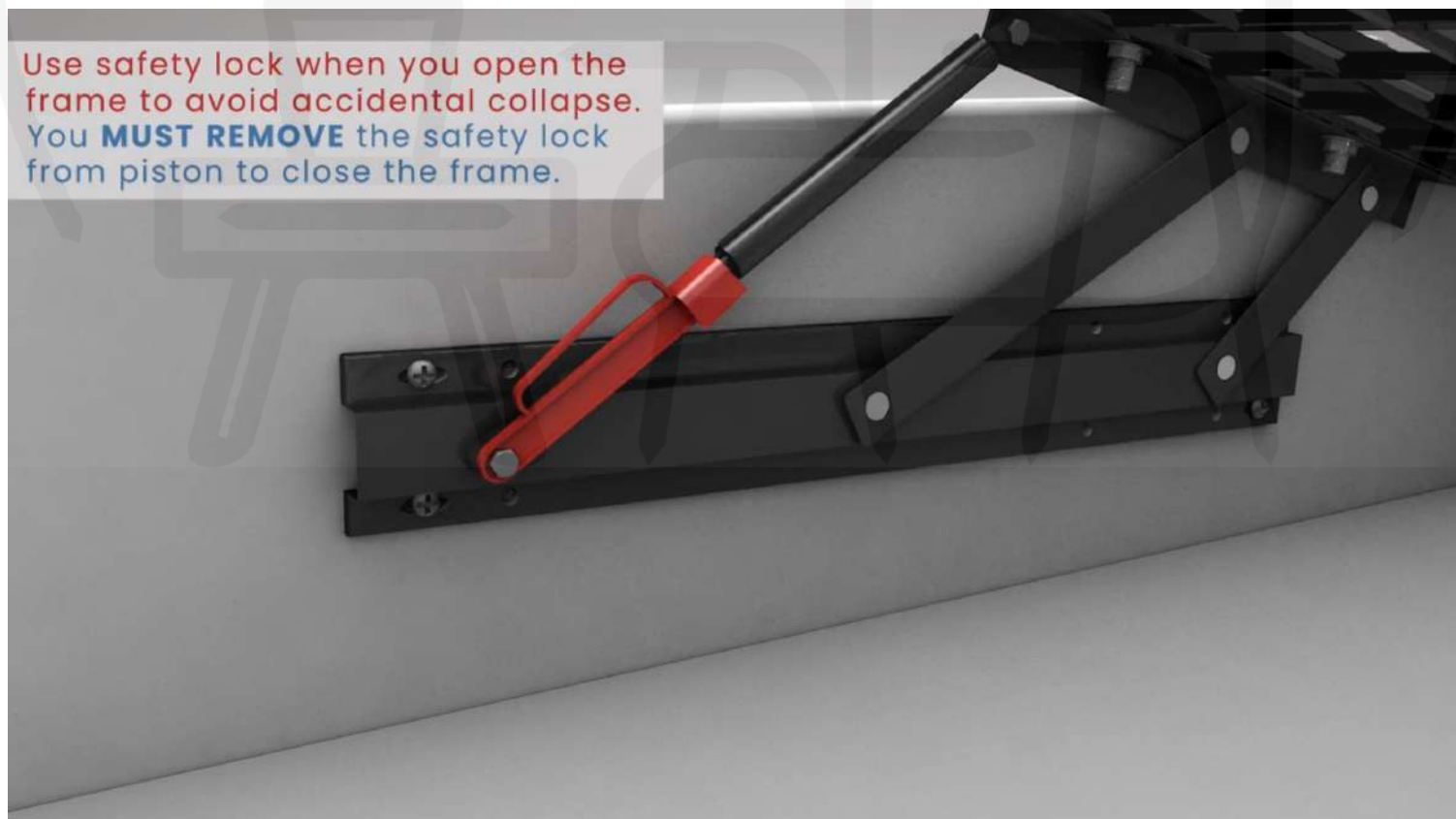
Step 17:



Attach the remaining piston to the hinge using the M8x15mm bolts in the locations shown above.

Step 18:

Use safety lock when you open the frame to avoid accidental collapse. You **MUST REMOVE** the safety lock from piston to close the frame.





Please dispose of all packaging safely.

General Care & Maintenance

Wipe clean with a slightly damp cloth.

Avoid the use of all household cleaners and abrasives.

Periodically check all screw & fixings to ensure they are secure.

When moving your product, carefully lift into place. Never drag or push the pieces across the floor as this will cause damage to the joints and could result in failure to the product that will invalidate the warranty.

Notes

All beds are bespoke and handmade, therefore please allow a tolerance of 1-2 inches on expected dimensions.

We have tried to make this product as easy to assemble as possible. We pre-fit some fixtures for your convenience - please note they may require slight adjustments.